

The Nugget

Volume 9, Number 2

Spring 2020

*Lambertville Historical Society's
Quarterly Newsletter*

James Wilson Marshall House Museum

www.LambertvilleHistoricalSociety.org

NOTE TO ALL MEMBERS: Due to the Coronavirus crisis, as of print time all LHS activities are suspended and the Marshall House remains closed until further notice.

Check our website – LambertvilleHistoricalSociety.org – for any changes. Emails to our members will also provide updates.

Please observe health recommendations, stay safe and be well. We hope to see you again soon.

The officers and trustees of the Lambertville Historical Society

Digitization's Benefits On Display

- Mike Menche

In 2016 we discussed with the Lambertville Free Public Library the digitization of its microfilm archive of our former local newspapers, *The Beacon* and *The Lambertville Record*. The library's director, Harold Dunn, has worked tirelessly on this project. He digitized and recently posted an initial tranche of files comprised of available Beacon issues from the years 1860-1899, 1908-1909 and 1977-1978 at <https://lambertville.advantage-preservation.com/>.

Browse *The Beacon* issues or key-term search for free, from your computer or phone. The key-term search and the PDF viewer take getting used to, mainly because some of the source microfilm was not clear enough to be completely scanned and read, but the results are valuable. For example, searching "history of Lambertville" (quotation marks included) yields the following:

- an early history of Lambertville and its religious societies from the April 16, 1908 edition "copied from an issue of *The Beacon* of the year 1866"
- a thorough history of Lambertville High School by Mildred Smith, from the November 24, 1977 edition, reprinted from a 1960 article
- a liquidation sale—"the greatest sale in the history of Lambertville"—of men's, boy's and children's clothing on Church Street, near Union, as advertised in the January 16, 1908 edition.

When searching, you may want to try various permutations of terms and names. There are filters in the left margin to view only some search results at a time. The results previews are often nonsensical from the old issues because the words were incorrectly read when scanned, but click through to the edition itself and you'll find the text largely readable, especially when magnified via the toolbar at the top.

LHS is preparing two exhibitions at Marshall House later this year of photographs by John A. Anderson. An online search of *The Beacon* led to a March 3, 1910, article by the man himself. He detailed the history of the Civil War Soldier's Monument, which now stands in Mary E. Sheridan Park. Anderson noted that he had planned the monument back in 1869. Five thousand people attended its rededication in 1900, at which New Jersey Governor Foster Voorhees delivered the principal address.

Digitization is aiding the upcoming exhibits. The Mercer Museum Library of the Bucks County Historical Society is providing LHS with high-resolution scanned images of the original glass-plate negatives we requested. Working with local professional photographers, we will create and display prints that should be well worth a look.

**Join, renew membership, or donate to the LHS at
LambertvilleHistoricalSociety.org/membership**

Annual Meeting and Canal Presentation January 19

A good-sized audience enjoyed our annual meeting and, even more, our guest presentation about the Delaware & Raritan Canal.



After some brief business activities such as approval of the LHS budget, the previous year's meeting minutes, and the 2020 slate of officers and trustees, President Mike Menche (above) recounted the many LHS activities over the previous 12 months.

- How to Research the History of Your Home
- Plein Air Plus Auction
- Memory Project with long-time residents
- Magic on Music Mountain movie and performance at Kline's Gallery
- Shad Fishing Demonstration
- Membership Social
- Scholarship opportunity for SHRHS students
- Quilt exhibit and lectures over two weekends
- Gaia's Way Farm Tour
- 37th House Tour
- Special Halloween Walking Tour
- "From Saigon to Lambertville" presentations and artifact exhibit over two weekends
- 2019 Holiday CD and three release concerts

Mike then introduced, Linda Barth, author and executive director of the League of Historical Societies of New Jersey and president of the D&R Canal Watch. Through a lecture and illustrations, she covered the storied history of the Delaware & Raritan Canal from a commercial and industrial transportation thoroughfare to a premier recreation facility in central Jersey.



Linda Barth of the League of Historical Societies of New Jersey and president of the D&R Canal Watch gladly addresses the group and responds to questions at the annual meeting.

Welcome New Members

James & Dawn Alpaugh
 Karen Cinkay
 Raven Crispino
 Ree Czajkowski & Patrick Gallagher
 Toni & John Gabrick
 Denise Brown-Kahney & Michael Kahney
 Gerald Levine & family
 Joan & Joern Lindenau
 Kevin & Katie Michels
 Richard & Mary Ann Soto
 Laura Winterhalter & family

Plein Air Plus Art Auction, February 22

It's been eight wonderful years of our Plein Air Plus Art Auctions and it continues to attract art lovers, LHS members and the community. A capacity crowd partook of delicious food samplings, sipped wine and admired and bid on more than 30 works of art by local artists.

As always, there are a lot of thanks to go around – to Rago Arts and Auction Center for providing the venue; to the restaurants and other food establishments for giving us delightful samples of their finest (we wish them and their employees the best in getting through this difficult time); to the artists for their talents and generosity; and to the volunteers that pull this together each year. Thank you all very much!



The crowd enjoyed artwork as well as each other's company (not to mention food and beverages).



Cheers!



The Lifters in tune to entertain.



A band's-eye view of the festivities.

Thank You for the Donations

We thank our generous Centurions and all of our members for their continued support. We recognize those below for making a donation beyond their membership dues during the last quarter (we apologize if we missed anyone). It is always sincerely appreciated.

J.B. Kline

Philip Marshall completed what we today call the Marshall House in 1816, more than 200 years ago. We recently came across the below article from the Fall 1974 issue of the Hunterdon County Historical Society newsletter. It was prepared by the LHS curator at the time soon after the state's renovation and restoration of the house. We hope that you find it of interest.

FORTUNES OF THE MARSHALL HOUSE IN LAMBERTVILLE

James Wilson Marshall discovered gold in California in 1848, which led to the gold rush, admission of California as a state and expansion of the United States "from sea to shining sea". Marshall's boyhood home at 60 Bridge Street in Lambertville has been in process of restoration by the state of New Jersey for the past seven years. Inside, the Lambertville Historical Society is equipping two historic rooms and a museum, which will be open to the public this fall. The Marshall House was accepted by the National Park Service for the National Register of Historic Places in December, 1970.

The Marshall House, of course, was the creation not of James but of his father. Philip Marshall had it built in 1816 on a tract of land containing "44 perches" that he bought from Joseph Lambert. The deed specified

"Said Philip Marshall his heirs and assigns is not at any time to keep an inn or tavern on said lot."

The Lamberts had built their four-story inn a few doors west on Bridge Street only four years before, and needed no competition from the Marshalls.

The architect and builder of the Federal style Marshall House are unknown. The room arrangement is simple - hallway front to back along the east side, two rooms off this hall, stairway to the second floor, upstairs one large room front (partition removed) and one room and hall to the attic at the rear.

The Marshalls occupied two lots, one 30 feet and one 33 feet. Slight additional front footage was added in 1831. The depth of the lots, 200 feet, indicated the expansion of buildings to the rear.

Philip Marshall moved into this brick house in 1816 with his wife Sarah, their six-year-old son and future gold discoverer James, and two-year-old daughter Abigail. Over the years three more daughters were born - Rebecca, Mary and Sarah H.

Seven people, then, made up the Marshall family. The United States Census of 1830, however, listed nine people in the house, the family plus a young man in the 15-20 age group (perhaps an apprentice) and a 3 to 6-year-old girl.

Philip Marshall was a man of affairs in the community. He served as Justice of the Hunterdon County Court beginning in 1822. He and his wife were, two of five who organized the Baptist Church of Lambertville in 1825. (The Marshall House and the Baptist Church stand opposite each other on Bridge

Street today.) Philip Marshall was a wheelwright and wagonmaker by trade, and kept his shop next to the house.

Traces of Philip Marshall's life appear in the pages of Hunterdon County's first weekly newspaper, the *Gazette and Farmer's Advertiser* 3, beginning March 24, 1825. That July, an advertisement listed Philip Marshall as administrator in the sale of the land of Peter Horn, deceased. In September, 1827 his name appeared as "attorney" in the sale of the house and lot of Andrew Kirkpatrick. In August, 1828, Philip Marshall with Jacob B. Smith and P.W. Appleton placed an ad entitled "Look Here!" for Thomas Green's Patent Lever Power Mortising Machine. Later that year, Marshall's name appeared on the Executive Committee of Amwell Township to elect Andrew Jackson President. In 1831 Hezekiah Elwood advertised that \$10 reward would be paid by himself or in his absence by Philip Marshall, Esq. for apprehension of a certain thief.



Original sketch of the Marshall House, Lambertville, N.J., done by Inez McCombs in August 1974.

Some reason, perhaps the offer of high wages in a financially depressed season, prompted Philip Marshall to leave Lambertville for a job on the new railroad being built between Washington D.C. and Baltimore. There he contracted typhus and died. His death notice appeared in the *Gazette* of October 1, 1834:

"DIED, on Thursday last, the 25th ult, on the Railroad line between Baltimore, and Washington, where he has been some time engaged as a contractor, PHILIP MARSHALL, Esq. of Lambertville, a Judge of the Court in this county. On Saturday his remains were brought to Lambertville for interment."

His brother William Marshall and his former partner, Jacob B. Smith, served as administrators, and his estate was inventoried on October 3, 1834.

In the Inventory 4, the most expensive items of furniture were the "eight day brass clock and case \$20", "stripped woolen carpet 23 yds \$12", and "settee and two foot stools \$8.75". Other furniture included 22 Windsor chairs, four bedsteads and a cot (two people to a bed plus one equals nine people of the 1830 Census), two "chard" tables, three bureaus (cherry, mahogany front, and "old"), one large and one small looking glass, and fire-place equipment.

Other household utensils were a meal chest, clothes horse, wash tub, tea waiters, two spinning wheels, barrel filled with wool, barrel of vinegar. soap tub, bake iron, churn, lye pail, one ten plate stove and one cooking stove. Just after the "old work bench in back yard", the inventory listed "one two horse sleigh one ditto for one horse \$24" and a "fancy Dearborn waggon & harness for one horse \$30". Were these Philip Marshall's family vehicles? No horses or other live-stock are listed. Further along, among the "work shop", "shop cellar" and "shop chamber" things, were "interest in new sleigh two thirds \$25, interest in new Sulkey, two thirds \$33, interest in one other Sulkey, two thirds \$20." A little over a year later, on November 25, 1835, Philip Marshall's real estate was advertised for sale in the Gazette:

"Lot No. 1. On the north side of Bridge Street containing 67 feet front and 200 feet deep, adjoining lands late of Mercy ' Coryell and others. On this lot is a good two story Brick House 25½ feet front by 27 feet back, with two rooms on the first floor and an entry through, and three rooms on the second floor, a garret etc., a brick kitchen adjoining, 16x18 feet with a good well of water at the door under cover of a shed; also on said lot a large wheelwright shop, barn, and other outbuildings, such as a woodhouse, smokehouse, hogpen etc.

Lot No. 2 lies on the east side of No. 1, 40 feet front and 200 feet deep, a handsome building lot etc."

This description would seem to settle the controversy about how much house existed when the Marshalls knew it, since more rooms were added later and then all but the front part, 25½ x 27 feet, torn down in 1966.

Gershom Lambert bought the house and lot in 1836, and sold it in 1841 to Mira, Sarah, Cornelia and Hannah Coryell. Hannah sold to Hugh B. Fly in 1873. Fly sold it to the Catholic Church of St. John the Evangelist in 1882. The teaching sisters of the church school used the house as their convent. The Church deeded the house to the State of New Jersey in 1966.

When the Sisters of Mercy lived in the Marshall House, it was joined by inside doorways to the house on the east. In 1966 the rear part and the house next door were torn down. The remaining back wall of brick was pierced by six doorway openings. This wall had to be completely rebuilt of new brick, because not enough of the old large bricks were available.

The window openings had to be "unmodernized" to smaller dimensions, and small-pane sashes installed. In the parlor, a

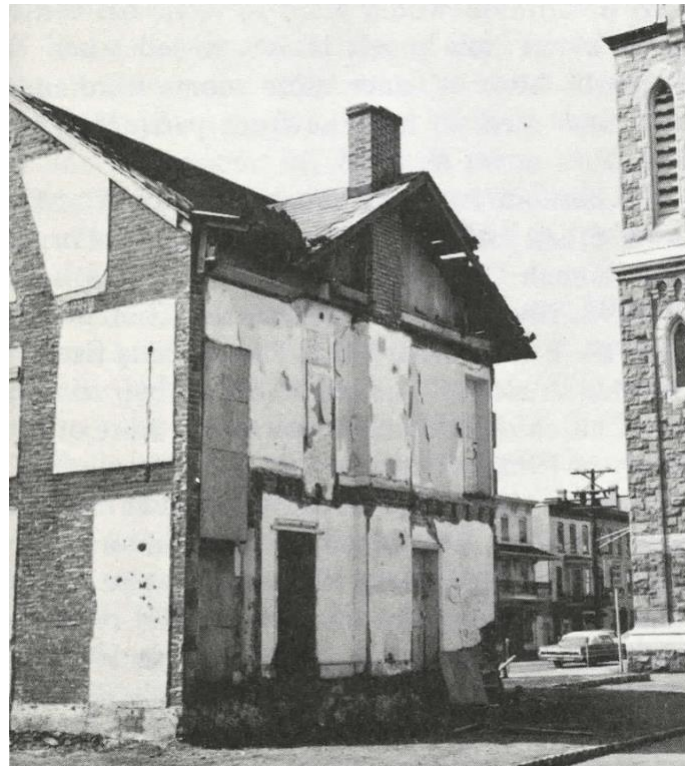
fireplace mantel was reconstructed in the style of 1816. An office, lavatory and stairway to the basement was created in the small space of the first floor back room. Upstairs, marks uncovered on floor and ceiling indicated that the large front room had once been two. The room was left whole, however, for a museum and meeting room. In 1966, the attic had one plastered room with a small window looking toward the Delaware River bridge. The board and batten door to this room has old wavy glass panels, allowing outside light from the other small attic window to enter. Now, all the attic is finished and usable.

The restoration of the exterior of the Marshall House is complete. It is not a total home, but a combination of historic rooms, small museum, and headquarters for the Lambertville Historical Society. Basement, first floor, second floor and attic are use-fully equipped for workrooms, exhibits, meetings and storage.

Official dedication and opening of the Marshall House is scheduled for this October, the 164th anniversary of James Wilson Marshall's birth.

-
1. In the Hunterdon County, New Jersey Hall of Records
 2. In the Hunterdon County Historical Society Library
 3. In the Hunterdon County Historical Society Library
 4. In the New Jersey State Library, Trenton

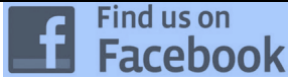
**by Marjorie Congram, Curator
Lambertville Historical Society**



Side and back of the house before restoration, showing connection with back rooms and house on the east.

LHS Calendar – will return when we are again able to have events.

LHS would still like to send *The Nugget* to members by email where they can read the full-color pdf version and have one less item to recycle. **More than a third of LHS members have signed up.** Why not join them? If you are interested, please write to info@LambertvilleHistoricalSociety.org.



Find us on
Facebook

www.facebook.com/LambertvilleHistory



Lambertville Historical Society

P.O. Box 2
60 Bridge Street
Lambertville, NJ 08530
609-397-0770

www.LambertvilleHistoricalSociety.org

Our Mission

The Lambertville Historical Society promotes the preservation and appreciation of Lambertville's architecture and history through education and community involvement, as well as operates and maintains the James Wilson Marshall Museum.

The Marshall House is open from 1:00 to 4:00 PM on weekends between Shad Fest (normally the last weekend in April) and the end of October. Free admission.

Officers

President	Michael Menche
Vice President	Deborah Galen
Treasurer	Laurie Weinstein
Secretary	Liz Riegel

Trustees

Jeff Campbell	Suzanne Gitomer
Nancy Campbell	Jeff McVey
Fred Eisinger	Lou Toboz
Mark Weinstein	

The Nugget is the quarterly newsletter of the Lambertville Historical Society © 2020.

Editor: Fred Eisinger
Contributor: Mike Menche

The Lambertville Historical Society received an operating support grant from the Hunterdon County Cultural & Heritage Commission, with funds from the New Jersey Historical Commission, a division of the Department of State.

